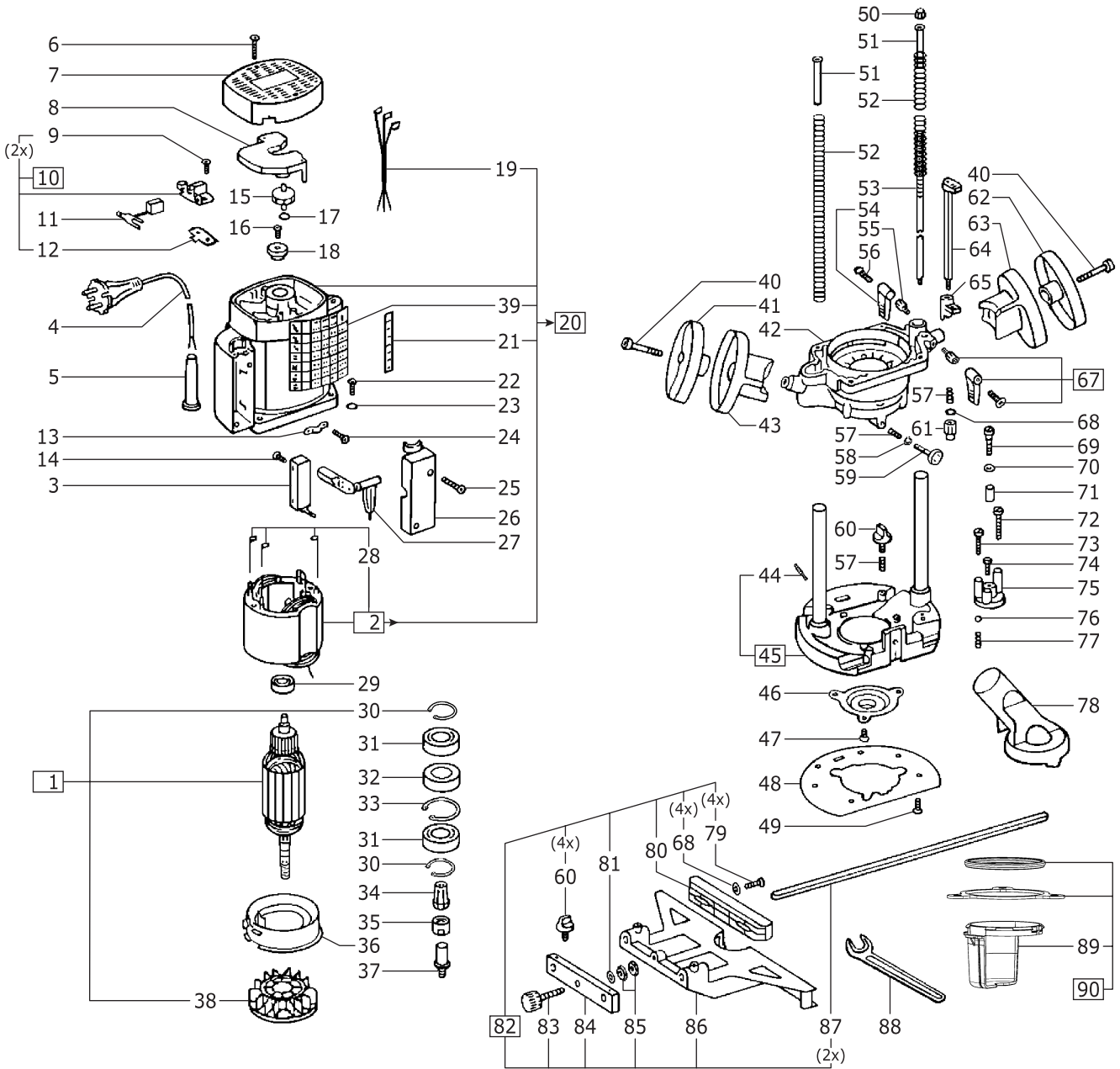


Bitte B.Nr. bei Ersatzteilbestellungen angeben!  
Please give B.Nr. when ordering spare pieces!



Gültig für B.Nr. / Valid for B.Nr.:  
489 911 (OF 2000 E/1, 230 V)  
493 206 (OF 2000 E/1, 110 V, GB)

491 335 (OF 2000 E, 120 V)



Pos. Item	Best-Nr./Symbol Order/Symbols	St. Qty.	Pos. Item	Best-Nr./Symbol Order/Symbols	St. Qty.	Pos. Item	Best-Nr./Symbol Order/Symbols	St. Qty.	Pos. Item	Best-Nr./Symbol Order/Symbols	St. Qty.	Pos. Item	Best-Nr./Symbol Order/Symbols	St. Qty.	Pos. Item	Best-Nr./Symbol Order/Symbols	St. Qty.			
1	490 111 (OF2000E)	1	8	446 602 (OF2000)	1	20	491 627 (OF2000 E 110V+120V)	1	35	-	-	53	457 343	1	73	436 812 (M 5 x 25)	1			
1	490 112 (OF2000)	1	8	491 339 (OF2000E GB 110V)	1	21	444 753 (OF2000E USA)	1	21	444 753	1	35	-	-	54	438 944	1	74	436 811 (M 5 x 20)	1
1	491 338 (OF2000E GB 110V)	1	8	491 339 (OF2000E USA)	1	22	400 102	4	36	457 329	1	55	444 746	1	75	436 520	1			
1	491 338 (OF2000E USA)	1	9	400 517	4	23	400 105	4	37	487 160	1	56	-	-	76	783 305	1			
2	486 982 (OF2000E)	1	10	-	2	24	203 796 (C 3,9 x 13 DIN 7981)	2	38	-	-	57	444 754	4	77	436 528	1			
2	487 256 (OF2000)	1	10	491 664	2	25	203 747 (C 3,9 x 25 DIN 7981)	2	38	491 341	1	58	400 106 <sup>4</sup> (DIN 6799)	1	78	444 376	1			
2	491 628 (OF2000 E GB 110V)	1	11	489 342	2	26	444 720	1	39	457 731	1	59	489 700	1	79	770 443 (M 6 x 16 DIN 84)	4			
2	491 628 (OF2000 E USA)	1	11	489 343 (GB 110V+USA)	2	27	487 166	1	40	400 080 (M 6 x 40 DIN 6912)	2	60	444 633	6	80	444 719	2			
3	444 709	1	12	451 900	2	28	488 973	1	41	444 727	1	61	444 381	1	81	336 815 (A 12,5 DIN 2093)	1			
4	460 463	1	13	444 707	1	29	401 550	1	42	457 333	1	62	444 725	1	82	487 839	1			
4	460 847 (CH)	1	14	400 130	4	30	400 636 (A 25 x 1,2 DIN 471)	2	43	444 726	1	63	444 724	1	83	484 791	1			
4	460 848 (AUS)	1	15	444 728 (OF2000E)	1	31	400 635	2	44	400 201 (4 x 26 DIN 7346)	1	64	487 165	1	84	444 744	1			
4	467 601 (GB 110V)	1	16	400 360 (OF2000E)	1	32	457 332	1	45	487 164	1	65	444 721	1	85	200 601 (B M 6 DIN 439)	2			
4	462 505 (GB 240V)	1	17	200 911 (OF2000E)	1	33	771 487 (1 47 x 1,75 DIN 472)	1	46	487 016	1	66	-	-	86	444 714	1			
4	465 859 (USA)	1	18	444 739 (OF2000E)	1	34	492 005 (D 8)	1	47	400 136 (M 5 x 10 DIN 963)	3	67	490 429	1	87	444 745	2			
5	444 708	1	19	446 179 (OF2000E)	1	34	492 139 (D 10)	1	48	444 748	1	68	217 149 (6,4 DIN 433)	5	88	401 745 (SW 22 DIN 894)	1			
6	400 081 (BZ3,9 x 45 DIN 7981)	2	19	446 204 (OF2000)	1	34	492 140 (D 12)	1	49	770 273 (M 4 x 8 DIN 963)	6	69	400 859 (M 6 x 25)	1	89	466 390	1			
7	444 723 (OF2000E)	1	19	462 478 (OF2000 E 110V+120)	1	34	492 141 (1/4")	1	50	400 103 (M 8 - 6 DIN 917)	1	70	200 578 (B 6,4 DIN 125)	1	90	493 259	1			
7	445 725 (OF2000)	1	20	486 981 (OF2000E)	1	34	492 142 (3/8")	1	51	400 078	2	71	436 300	1						
8	487 384 (OF2000E)	1	20	487 255 (OF2000)	1	34	492 143 (1/2")	1	52	444 756	2	72	436 813 (M 5 x 30)	1						