

# DRILLER TOGGLE

## Overview

- Hollow Wall Anchor
- Use: Drywall and Paneling



## Features and Benefits

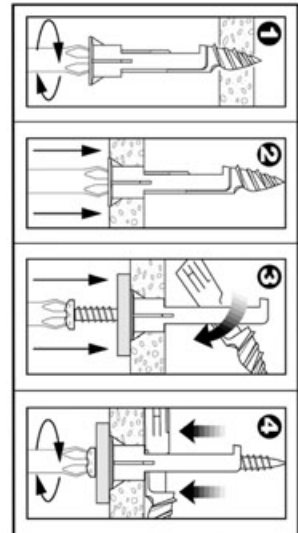
- Easy Installation
- No Pre-Drilling Required
- Economical
- Types: Zinc Alloy
- Available Size: #8 x 2"
- Screw Driver only tool needed
- Sold with screw only



## Applications

- Heavy Picture Hanging
- Mirrors, Lighting Fixtures and Accessories
- Bathroom Fixtures
- Plant Hook Application
- Cabinetry
- Shelving/Storage systems
- Ceiling fixtures
- Electrical Installation

## INSTALLATION STEPS



<b>DrillerToggle™ Specification</b>			
Gypsum Board Drywall			
Use a 4:1 Safety factor			
Size	Drywall Gypsum Thickness	Ultimate Pullout (Lbs.)	Ultimate Shear (Lbs.)
#8 x 2"	3/8	87	231
#8 x 2"	1/2	106	253
#8 x 2"	5/8	160	285